

COLLIE ADVOCATE

THE TSCR NEWSLETTER



Mid-Winter 2025

Welcome to the Collie Advocate. The Official Tristate Collie Rescue Newsletter! We salute new and old Collie lovers! We are proud to present timely and important information. We hope to continue forth with interesting articles, Happy Tails of Adopters and advice and insight from our volunteers. Please feel free to contribute, request articles, or ask for pertinent content related to our beloved Collies!!

Direct all correspondence to: colliedvocate@aol.com

Meet Tristin! TSCR Alumni class of 2018. Loving adored by Marilyn Baumgart.

In This Issue:

FROM THE VPS CORNER~

In my dual role of VP and Transport Coordinator, I find myself continually thanking all of our incredible volunteers for their generosity of time and resources helping the Collies. As the saying goes, "it takes a village" could not be truer in rescue. We are ALL integral in completing our mission so successfully. But my thanks are simply not the same as the gratification received from the Collies we help. From the look of relief when you have them in tow on their ride to freedom, to the relaxed posture when they finally get a warm bed, nutritious food and of course, love. Something they may not have had ever. The best and worst day of rescue is adoption day, when the time comes to send them off with their furever family. Yes, it can be heartbreaking and joyous at the same time. But we know at that point we have done our job. This last year has seen unprecedented growth with Collies needing our help. We adopted out close to 170 Collies in 2024, and it does not seem to be slowing down. We are always looking for volunteers to share in this amazing experience to support our continued growth as we head into our 41st year!

Jill Fredrickson

 **A Note from our
Vice President**

 **BLOAT!**

Something you must not ignore.

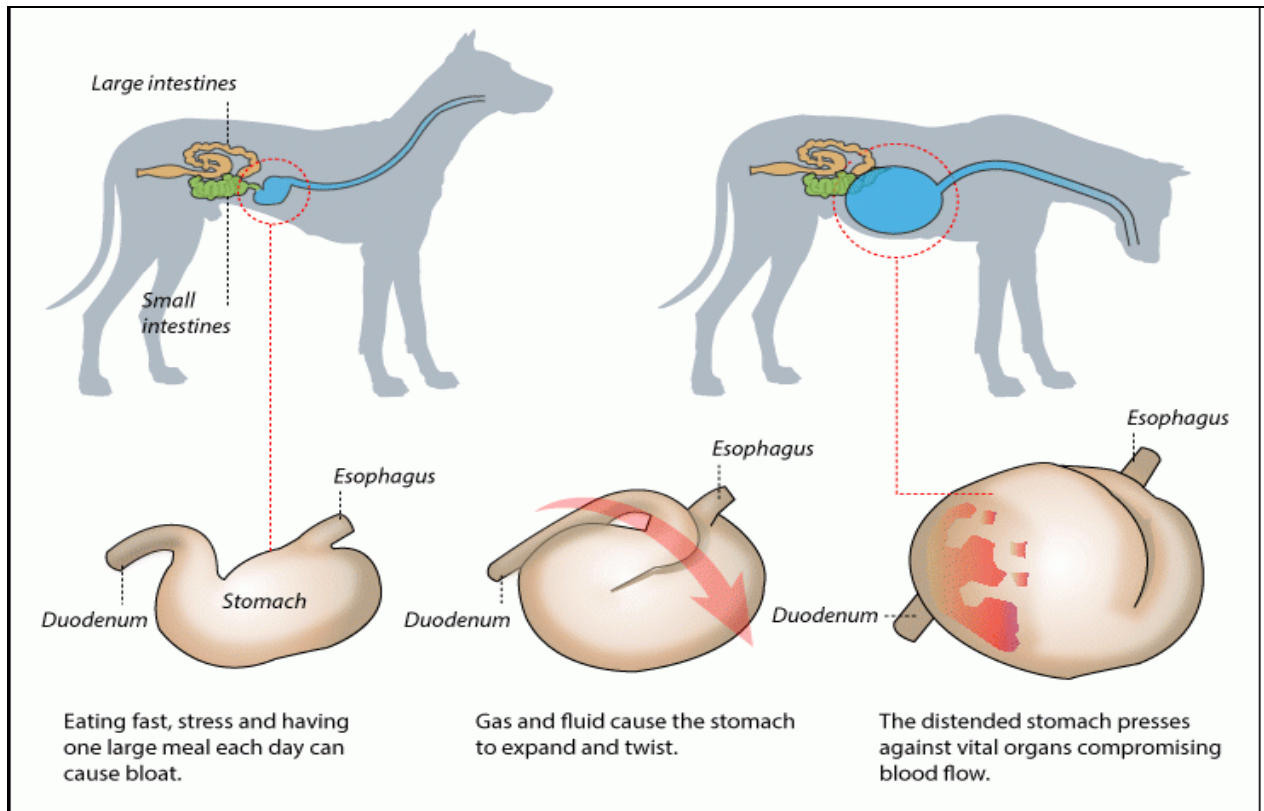
 **Capillary Refill Time**

First Sign something is amiss.

 **Sweet Treats!**

Valentines Day special

What is Bloat? Bloat is a term that is often used to describe the condition GDV. GDV stands for Gastric Dilatation and Volvulus. It is a life-threatening condition that can develop in some dogs that causes the stomach to rapidly fill with gas and/or fluid and then flip upon itself. Once rotated, the gas is unable to escape and continues to build up.



Who can get Bloat? Dogs that are at high risk for GDV are large and giant breed dogs and dogs with deep or barrel shaped chests. It has also been suggested that dogs that have nervous temperaments, are in high stress situations, eat too quickly or had a parent or sibling that bloated may also be at higher risk.

How do I know if my dog Bloats? Often signs of GDV develop 2-3 hours after eating a large meal. However, it does not need to be associated with eating at all. The classic sign of bloat is unproductive retching (it looks like your dog has to throw up, but nothing comes out). The abdomen appears to be swollen and firm to the touch. Breathing may also appear to be labored, and they may have a hard time getting up or even collapse. CRT (capillary return time) time is greater than 2 seconds, gums and tongue are white to blue in color. (see article below to learn how to check this!)

Is this an emergency? YES!! YES!! YES!! When the stomach becomes distended and then rotates, both the entrance and exit to the stomach are blocked. Extreme distention of the stomach decreased and blocks the blood supply to the stomach, as well as the blood flow to the rest of the body. Systemic circulation becomes seriously compromised resulting in systemic shock. Without treatment this condition is fatal in almost every case.

How is it treated? Treatment for GDV involves emergency surgery. However, even with emergency treatment and surgery, GDV is fatal in 10-30% of affected dogs.

How do I prevent Bloat?

There are a few things that can be done at home to help decrease the incidence of bloat, for instance, feeding your dog from a bowl on the ground instead of from an elevated bowl on a stand, and feeding at least 2 meals a day is helpful. If possible, leave dry kibble available 24 hours a day instead of feeding 1 or 2 large meals. This way your dog will eat small amounts over a period of time. If you have multiple dogs, your dogs will get used to eating when they want, and a few days of growling and posturing might be normal. They soon will self-regulate when they realize food is always available. However, the best way to put your nerves at rest would be to consider a prophylactic surgery called a gastropexy. A prophylactic gastropexy is a procedure that anchors the stomach to the inside of the body wall, preventing it from rotating when it becomes distended. This procedure can be done as a puppy at the time of their spay or neuter. Or even as a laparoscopic procedure in bigger dogs who have already been altered.

Print this chart out and keep it handy so you know in an instant if your dog starts to bloat.

Quick Reference Guide For GDV BLOAT			Vet's Emergency Telephone Number...	
	What Is Happening	What The Dog Does	What You Should Do	Treatment
Stress ▶▶▶ Excitement ▶▶▶▶ Vigorous Exercise ▶▶▶▶▶ Large Meals ▶▶▶▶ Long Drink ▶▶▶▶ Swallowed Air ▶▶▶▶ Familial Tendency ▶▶▶▶▶	Stomach function is normal. Gas accumulates in the stomach but the stomach does not empty as it should.	Dog behaves as usual. Seems slightly uncomfortable.	Keep the dog quiet; Do not leave the dog alone; Give Antacid if your vet agrees. Be aware of Phase I symptoms.	During this period the dog may recover without going on to develop Gastric Volvulus.
PHASE I GDV	Stomach starts to dilate. (Gastric Dilatation) Stomach twists. (Gastric Volvulus)	Anxious, restless, pacing; Trying to vomit-may bring up stiff white foam but no food; Salivating; Abdomen may be swollen.	Call your vet, tell him what you suspect and why. Take the dog to the vet without further delay.	During this period the dog may recover if your vet releases the pressure with a stomach tube.
PHASE II GDV	Blood supply to part of stomach is cut off. Stomach tissue is damaged. Portal vein, vena cava and splenic vein become compressed and twisted. Spleen becomes engorged. Shock begins to develop	Very restless; whining & panting; Salivating copiously; Tries to vomit every 2-3 min; Stands with legs apart & head hanging down; Abdomen swollen & sounds hollow if tapped; Gums dark red; Heart rate 80-100 beats/min; Temperature raised (104°F)	Get someone to tell your vet you are on your way and why. Take the dog to the vet as quickly as possible.	During this period the vet will need to relieve the stomach pressure, start an intravenous drip and perform surgery to untwist the stomach.
PHASE III GDV	Spleen and stomach tissue become Necrotic. Shock now very severe. Heart failure develops. Shock now irreversible. Death	Unable to stand or stands shakily with legs apart; Abdomen very swollen; Breathing shallow; Gums white or blue; Heart rate over 100 beats/minute; Pulse very weak; Temperature drops (98°F)	Death is imminent. Get someone to tell your vet you are your way and why. Take the dog to the vet as quickly as possible.	As well as doing everything above, the vet will need to remove part of the stomach and the spleen. He will also need to use powerful drugs to counteract shock. It is no longer possible to save the dog's life.

CRT and what it means.

Look at the color of your dog's gums. Healthy gums, which indicate good circulation, are bright pink. Gums that are dark red, gray, blue, or white indicate poor circulation. Be aware that some dogs have naturally dark gums. If your dog's gums are naturally dark, gently pull down on one of your dog's lower eyelids with your thumb and look at the color of the inner eyelid.

- The inner eyelid should be bright pink, just like healthy gums.
- You can also look at your dog's tongue. It should also be bright pink, unless your dog has a naturally dark tongue.



Check the capillary refill time (CRT). Capillaries are tiny blood vessels that branch off from larger blood vessels. CRT is another way to check your dog's circulation. It is the amount of time it takes for capillaries to refill with blood after putting light pressure on them. To measure your dog's CRT, gently press your thumb or index finger on your dog's gum for one or two seconds, then release.

- Your dog's gums will briefly look pale, then return to their normal pink color when the capillaries refill with blood.
- Normal CRT is less than one to two seconds.
- A CRT longer than two seconds can be due to dehydration, shock, or heart disease.

Take time to check and make a mental note of the CRT of your dog when he is healthy and is relaxed. Know ahead of time what 'normal' is for your dog. Some dogs naturally take more time to have capillary refill. Knowing your dogs 'normal' CRT will help you assess when it is not

Sweet Valentine Day Treats

You can make for your pups!

(That are easy, safe, and healthy too!!) by Theresa Atkin

Cranberry Energy Bites

1/3 cup dried cranberries

1 cup almond flour

1/3 cup peanut butter

1. Line a flat baking tray with baking paper.
2. Add all ingredients to food processor and mix until smooth.
3. Scoop out bite sized pieces with a spoon and roll into little balls.
4. Place on the lined tray, refrigerate for 30 min n serve.

I always make a double batch and instead of putting in the refrigerator I put them in the freezer. Once frozen I put in zip lock bags and leave in the freezer, especially in the summer. Honestly, I don't think my guys chew these, they just swallow them! Refrigerate any leftovers!!

Happy eating!



Lona, Logan and Adair patiently waiting.



It's munch time!!



Good to the very last crumb!

Party Invitation

Please join us

In our foster program.

*We **NEED** Fosters.*

Without you as a foster,

*we **CANNOT** bring in any more collies.*

We have reached our foster capacity.

Place: Everywhere

*Time: **NOW***

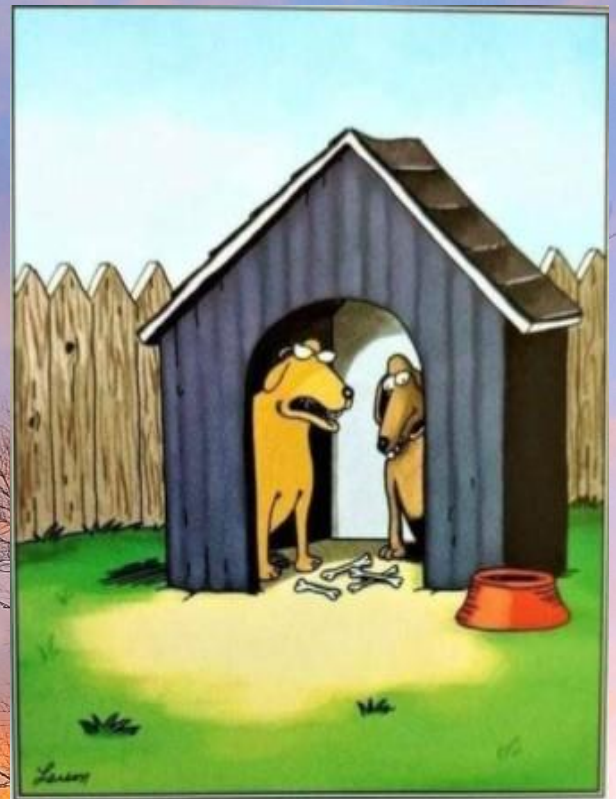
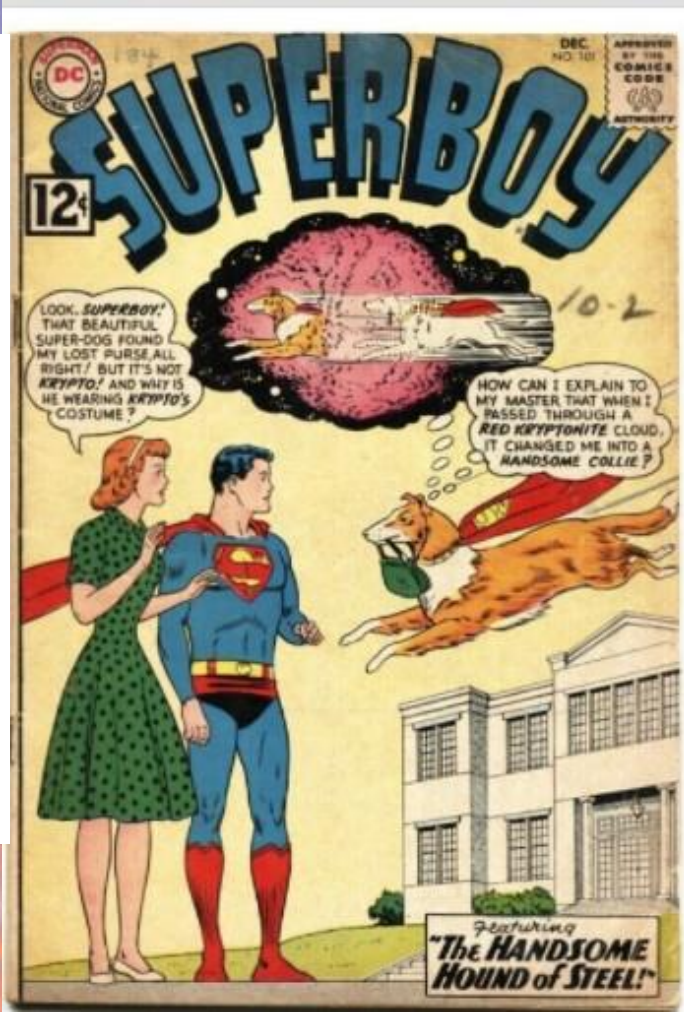
Please bring: Your Heart

RSVP: Your Conscience

Sharon Goodburn lassie5900@aol.com

Please volunteer to foster today> Tristatecollierescue.org

Who knew Superman had a collie?? Something to do with red kryptonite. If you are so inclined to read the whole comic you will likely find it by doing an internet search for Superman #157 (Nov 1962) and Superboy #101 (Dec 1962)



"Look, You had five bones, right? Your friend Zooky comes over, stays awhile, then leaves. Now you have four bones, right?...You don't have to be 'Lassie' to figure this one out."

Who remembers these simpler times?



Meat-loving dogs love FRISKIES!

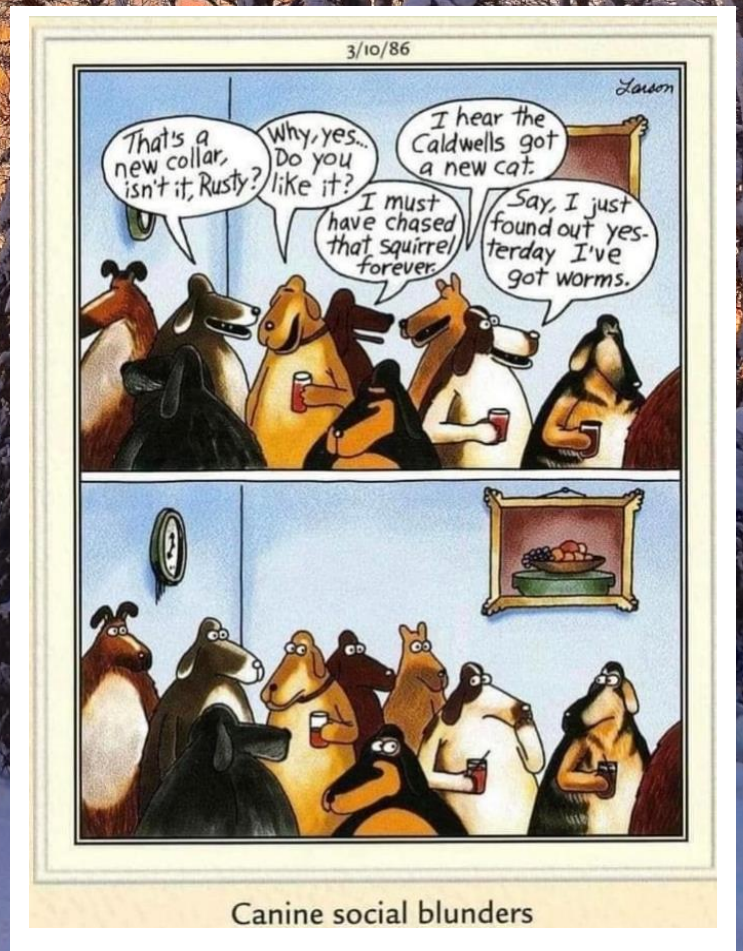


MEAT-LOVING DOGS. There's more meat and more taste in Friskies than any other single ingredient. It's the best, best-quality meat there is - including chicken, beef, turkey and lamb.

FRISKIES DOGS. Friskies gives your dog the extra taste he craves, plus the high protein of fresh meat.

WHILE SOME DOGS simply fill Friskies into their stomachs, you strive to raise the world's best dog. You're looking for only the best.

BECAUSE DOGS Friskies is completely dog food as every ingredient, developed by the best scientists of the American Company, has the U. S. Government's



Canine social blunders